



*Lake House*  
COLLECTION







Everyone can remember that *special* place where a kid can have fun and ADVENTURE all day, then *relax* for a well-earned rest and wake up **refreshed**, ready to do it all again.

For our family that special place is the *Lake House*.

Designed to offer the same allure of a lake retreat, the **Lake House** Collection offers a fresh approach to cottage styling with its updated hardware, clean lines and casual bun feet. During the design process, great care was taken to ensure **this collection** would seamlessly blend with any home décor, whether it be a home in the city, the suburbs or even the lake.

The **Lake House** Collection, constructed of Eastern US poplar solids & veneers, is available in two beautiful finishes, white and stone. The refreshing white finish and the rich hues of the stone finish both create the perfect backdrop to any decorating style. This all American classic is trend-right and is sure to remind your family everyday of their special place.

## NE Kids

Established in January of 1979, NE Kids (originally known as New Energy Bedrooms Inc.) has truly stood the test of time. This family owned business, based in Christiansburg Virginia, credits its success to delivering innovative products and supporting those products with exceptional customer service. A mantra that has stuck with us through the evolution of our company is “If we do not take care of our customer someone else will.”

For the past 6 years, NE Kids has been focused on designing comprehensive furniture collections for kids that create a fun environment, challenge the imagination and enhance creativity. NE Kids takes a lifestyle approach to youth furniture. Our products comprise a full array of children’s home furnishings. From desks, chairs, and bookshelves to beds, bunks, captain beds, and loft systems; we are confident that we have a solution to fit your needs.

At NE Kids we design big. We know that not every room is the same size and not every child or mother has the same vision. Our collections are extensive; offering multiple sleep, study, storage, and finish options.

As always, NE Kids puts safety first. All of our products are designed to meet the highest voluntary and mandatory standards set forth by the American Society for Testing and Material (ASTM) and Consumer Products Safety Commission (CPSC).

It is one thing to offer youth products, but another to assure timely delivery. NE Kids takes great pride in our ability to ship on time. We have spent the last 30 years developing an infrastructure to assure that all of our products are available on a quick-ship basis.

*We invite you to join the NE Kids family. We look forward to having you and your family as a satisfied customer for generations to come.*

# Contents

LH-o614

AVAILABLE IN TWO FINISHES:  
WHITE AND STONE

Payton Bed ..... 5

Kennedy Bed ..... 7

Adrian Bed ..... 9

Adrian Bunk ..... 11

Loft ..... 13

## Cases & Accessories

Dresser & Mirror ..... 14

5 Drawer Chest ..... 15

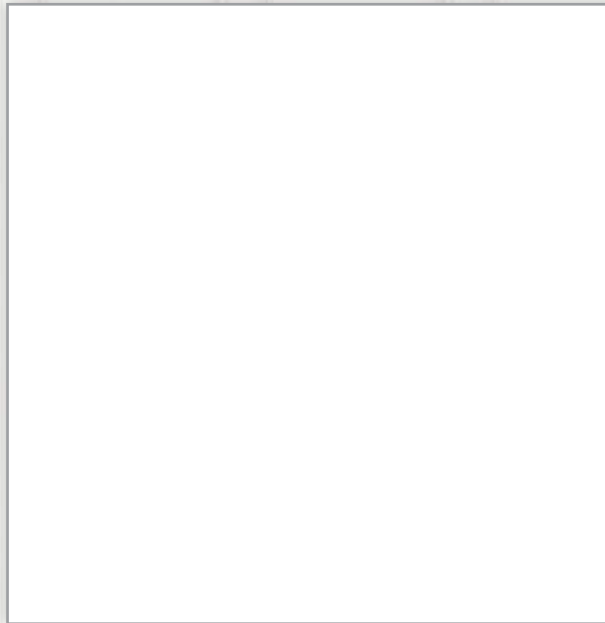
Nightstand/Hanging Nightstand .... 16

Vanity Mirror & Desk ..... 17

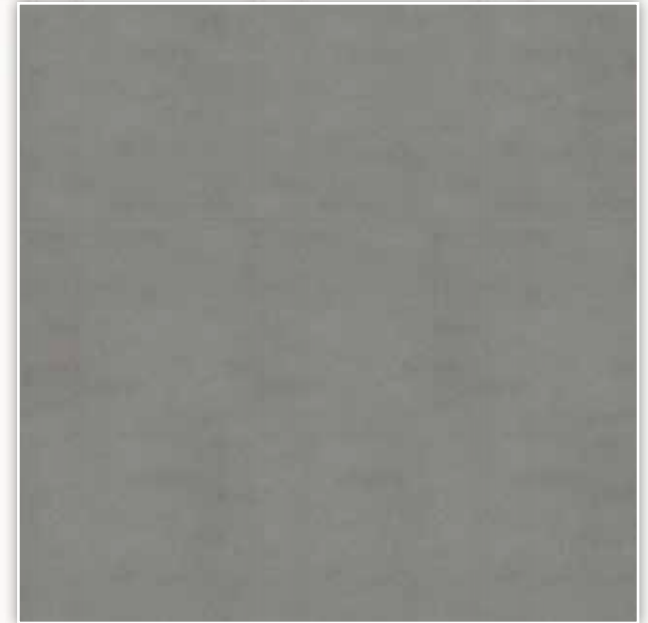
Entertainment Hutch & Desk ..... 18

## Under Bed Options

Trundle & Storage Unit ..... 19



Prefix "X" changes for finish:  
White = 1



Prefix "X" changes for finish:  
Stone = 2



*Lake House Hardware:*  
Outfitted with wooden drawer pulls featuring a brushed metal insert.



# *Payton Bed*





PAYTON FULL



PAYTON TWIN

# Payton Bed

From its cottage roots, the Payton Bed emerges with a classy modern look and a vintage appeal. The compound arch of the Payton Bed gracefully curves between two beautifully detailed posts, truly making a statement. All corners of the bed's posts are softened with chamfering, capped with ball finials and stand atop hand turned bun feet. The headboard panel features wide trim and step-down molding. The low footboard completes the updated styling.

## FEATURES & ACCESSORIES

X010-PAYTON TWIN : X015-PAYTON FULL  
81.5"L x 41.75"W x 50"H : 81.5"L x 56.25"W x 50"H

X018-PAYTON QUEEN/FULL HEADBOARD ONLY

HB DIMS: 50.75"H • FB DIMS: 27"H

- Hand crafted using Solid Eastern US Poplar and veneers over engineered wood, this bed is available in either White or Stone finishes.
- **Internal Bolt System:** This unique system provides a strong connection attaching the bed rails to the headboard/ footboard without exposing unsightly bolt heads.
- **Two Position Rail:** The rail can be mounted in either an upper or a lower rail position. The low position is intended for use with a premium pillow top mattress or mattress system and is an ideal height for smaller children. The upper position is intended for use with a Lake House Trundle or Storage Drawers (trundle and drawers sold separately).
- **Plywood Slat Roll Foundation:** The longitudinal strength of plywood makes it the ideal product for providing a lifetime of dependable support for all mattresses and mattress systems.
- **Advanced Center Support System:** A center support system is provided with all full size beds. This system is uniquely designed to support a full size mattress when the rail is set in either position. The center supports can also be used with the Lake House Trundle (trundle sold separately).

### Optional Accessories:

**Storage Unit X580**  
75.25"L x 15.25"W x 13"H

**Trundle X570**  
75.25"L x 40.5"W x 11.75"H



PAYTON TWIN



# Kennedy Bed







KENNEDY FULL



KENNEDY TWIN

# Kennedy Bed

*With its name befitting American royalty, the Kennedy Bed is an all American bed designed for an all-American kid. With the perfect combination of mass and detail, the chamfered posts stand atop turned feet and are capped with ball finials, creating the perfect book ends for the vertical board and baton detailed panels.*

## FEATURES & ACCESSORIES

X020-KENNEDY TWIN : X025-KENNEDY FULL  
81.5"L x 41.75"W x 48.75"H : 81.5"L x 56.25"W x 48.75"H

X028-KENNEDY QUEEN/FULL HEADBOARD ONLY

HB DIMS: 48.75"H • FB DIMS: 26"H

- Hand crafted using Solid Eastern US Poplar and veneers over engineered wood, this bed is available in either White or Stone finishes.
- **Internal Bolt System:** This unique system provides a strong connection attaching the bed rails to the headboard/footboard without exposing unsightly bolt heads.
- **Two Position Rail:** The rail can be mounted in either an upper or a lower rail position. The low position is intended for use with a premium pillow top mattress or mattress system and is an ideal height for smaller children. The upper position is intended for use with a Lake House Trundle or Storage Drawers (Trundle and drawers sold separately).
- **Plywood Slat Roll Foundation:** The longitudinal strength of plywood makes it the ideal product for providing a lifetime of dependable support for all mattresses and mattress systems.
- **Advanced Center Support System:** A center support system is provided with all full size beds. This system is uniquely designed to support a full size mattress when the rail is set in either position. The center supports can also be used with the Lake House Trundle (Trundle sold separately).

### Optional Accessories:

Storage Unit X580  
75.25"L x 15.25"W x 13"H

Trundle X570  
75.25"L x 40.5"W x 11.75"H



KENNEDY FULL

# *Adrian Bed*







# Adrian Bed

*No matter if it is in a home by the lake, the shore, in the country or the city, the Adrian Bed simply fits them all. The stately arches and wide-plank spindles are set between substantial 2.75" posts. The Adrian Bed has the style to transition with your child and family over time.*

## FEATURES & ACCESSORIES

### X030-ADRIAN TWIN BED

81.75"L x 42.75"W x 40"H

HB DIMS: 40"H • FB DIMS: 39.75"H

- Two twin beds can be easily converted into a bunk. (See page 10-11)
- Hand crafted using Solid Eastern US Poplar and veneers over engineered wood, this bed is available in either White or Stone finishes.
- Heavy-duty metal bolt-through side rail connection system for extra strength.
- **Plywood Slat Roll Foundation:** The longitudinal strength of plywood makes it the ideal product for providing a lifetime of dependable support for all mattresses and mattress systems.

### Optional Accessories:

#### Storage Unit X580

75.25"L x 15.25"W x 13"H

#### Trundle X570

75.25"L x 40.5"W x 11.75"H



# Adrian Bunk







ADRIAN TWIN/FULL



ADRIAN TWIN/TWIN

# Adrian Bunk

No matter if it is in a home by the lake, the shore, in the country or the city, the Adrian Bunk simply fits them all. The stately arches and wide-plank spindles are set between substantial 2.75" posts. The Adrian Bunk has the style to transition with your child and family through time. This bunk breaks down into two twin beds. (See page 8 & 9)

## FEATURES & ACCESSORIES

<b>X031-ADRIAN T/T BUNK</b> 81.75" L x 42.75" W x 74.75" H	<b>X035-ADRIAN T/F BUNK</b> 81.75" L x 60" W x 74.75" H
---	--

- Hand crafted using Solid Eastern US Poplar and veneers over engineered wood, this bunk is available in either White or Stone finishes.
- The bunk can be easily separated into two twin beds. (See pages 8-9)
- The ladder can be positioned on either the right or left side of the front rail.
- Heavy-duty metal bolt-through side rail connection system for extra safety.
- This bunk is mattress ready with a complete plywood slat roll foundation system. The longitudinal strength of plywood makes it the ideal product for providing a lifetime of dependable support for all mattresses and mattress systems. The mattress used on the top bed should not exceed 8" in height.
- This bunk easily converts to a twin over full with the purchase of a conversion kit.
- The twin over full ladder terminates at the lower rail to better accommodate a trundle.
- This bunk meets or exceeds all standards set by the CPSC and ASTM.

### Optional Accessories:

**Hanging Nightstand X590**  
15" L x 10" W x 5.5" H

**Storage Unit X580**  
75.25" L x 15.25" W x 13" H

**Trundle X570**  
75.25" L x 40.5" W x 11.75" H



ADRIAN TWIN/TWIN

# Loft







FULL LOFT W. LOWER BED



TWIN LOFT W. DESK

# Loft

The Lake House Loft not only offers tremendous storage and function, it does it with the ageless style of an American original. The loft is available with a full or twin upper bed and features a modular dresser/chest end with integrated shelving. You can choose to use the area under the loft as a grand office with the addition of an integrated desk or add more sleeping space with the addition of a full size lower bed. If you simply need more space, you can leave the space under the loft open.

## FEATURES & ACCESSORIES

<b>X040-LOFT TWIN</b>	<b>X045-LOFT FULL</b>
82.5"L x 43.25"W x 70"H	82.5"L x 58"W x 70"H

- Hand crafted using Solid Eastern US Poplar and veneers over engineered wood, this loft is available in either White or Stone finishes.
- The Twin Loft features a 4 drawer chest end; the Full Loft features a 6 drawer dresser end.
- The ladder and chest/dresser ends are completely modular and can be positioned on either the right or left side of the front rail.
- Heavy-duty metal bolt-through side rail connection system for extra safety.
- The Loft is mattress ready with a complete plywood slat roll foundation system. The longitudinal strength of plywood makes it the ideal product for providing a lifetime of dependable support for all mattresses and mattress systems. The mattress used on the top bed should not exceed 8" in height.
- The loft has the option of a desk or full size lower bed.
- The Loft meets or exceeds all standards set by the CPSC and ASTM.

### Optional Accessories:

**Integrated Desk** X040F  
65.25"L x 20.75"W

**Lower Bed** X040G  
82"L x 56.5"W x 20"H

**Hanging Nightstand** X590  
15"L x 10"W x 5.5"H



TWIN LOFT W. LOWER BED

# Dresser & Mirror

*Simple clean lines, hand-turned bun feet and understated details define the Lake House Collection case goods. Designed with ample proportions and refined step-down routing on the drawer faces, tops and moldings; NE Kids has created an instant American classic.*

## 8 Drawer Dresser X500

60"L x 18.5"W x 35.75"H

## Arched Mirror X510

34"L x 1.25"W x 39"H

### FEATURES & ACCESSORIES

- Eight Drawers: Four smaller drawers across the top over four larger drawers in the case body.
- Secret drawer hidden on the left side (right side facing) of the case piece in the lower molding. Kids love to have a special place to hide things, and parents appreciate the fact that they know right where to look.
- The mirror is finished with a beveled edge ensuring it is thick enough to reflect a clear, crisp image.
- Top drawers are felt lined.
- Five piece drawer boxes with English Dovetail joinery at the front and back of the drawer.
- Full Extension, Side-Mounted, Ball Bearing Drawer Guides.
- Outfitted with wooden drawer pulls featuring brushed metal insert.
- Bench built with kiln dried solid poplar frames and poplar veneers.
- Dust proofing at the bottom of each case.
- For added strength, the case good backs are inset and screwed in place.
- Anti-tip kit included for your child's safety.



FELT LINED TOP DRAWERS



FULL EXTENSION, BALL BEARING GUIDES



HIDDEN DRAWER





# 5 Drawer Chest

*Simple clean lines, hand-turned bun feet and understated details define the Lake House Collection case goods. Designed with ample proportions and refined step-down routing on the drawer faces, tops and moldings; NE Kids has created an instant American classic.*

## 5 Drawer Chest X520

40"L x 18.5"W x 47"H

### FEATURES & ACCESSORIES

- Five Drawers: Two smaller drawers across the top over three larger drawers in the case body.
- Secret drawer hidden on the left side (right side facing) of the case piece in the lower molding. Kids love to have a special place to hide things, and parents appreciate the fact that they know right where to look.
- Top drawers are felt lined.
- Five piece drawer boxes with English Dovetail joinery at the front and back of the drawer.
- Full Extension, Side-Mounted, Ball Bearing Drawer Guides.
- Outfitted with wooden drawer pulls featuring brushed metal insert.
- Bench built with kiln dried solid poplar frames and poplar veneers.
- Dust proofing at the bottom of each case.
- For added strength, the case good backs are inset and screwed in place.
- Anti-tip kit included for your child's safety.



FULL EXTENSION, BALL BEARING GUIDES



HIDDEN DRAWER



FELT LINED TOP DRAWERS



# Nightstand

*Simple clean lines, hand turned bun feet and understated details define the Lake House Collection case goods. Designed with ample proportions and refined step down routing on the drawer faces, tops and moldings; NE Kids has created an instant American classic.*

## Nightstand X530

24" L x 18" W x 25.75" H

- Spacious cubby over two drawers.
- Secret drawer hidden on the left side (right side facing) of the case piece in the lower molding. Kids love to have a special place to hide things and parents appreciate the fact that they know right where to look.
- Top drawer is felt lined.
- Five piece drawer boxes with English Dovetail joinery at the front and back of the drawer.
- Full Extension, Side-Mounted, Ball Bearing Drawer Guides.
- Outfitted with wooden drawer pulls featuring brushed metal insert.
- Bench built with kiln dried solid poplar frames and poplar veneers.



FULL EXTENSION, BALL BEARING GUIDES



FELT LINED TOP DRAWER



HIDDEN DRAWER



## FEATURES & ACCESSORIES

## Hanging Nightstand X590

15" L x 10" W x 5.5" H

- Designed to be used on the side rail of the upper bed on the Adrian Bunk.
- The top surface is coated to avoid moisture rings and to withstand common wear and tear.
- Usable surface area measures: 13.5" L x 7.25" W

## Hanging Nightstand

*The perfect companion to the Adrian Bunk, the hanging Nightstand is an excellent solution for that needed space while in the upper bed.*





# Vanity Storage Mirror & Writing Desk

*What girl doesn't want a place to sit and get ready for the day or simply pamper herself away from her siblings and the rush of a common household? Not only does it provide a cool spot to primp, it also offers storage and organization for necklaces, hair ties, bracelets, ribbons or crafts.*

## Vanity Storage Mirror X560

39.5"L x 4.25"W x 31.25"H

## Writing Desk X540

47.75"L x 22.25"W x 30.25"H

### FEATURES & ACCESSORIES

- Three separate mirrors (a center with left and right wings) finished with a beveled edge, solid wood frames and steel hinges.
- A magnetic touch latch allows access to the storage area located behind the center mirror.
- The storage area is lined with felt to help keep valuables and keepsakes looking their best.
- Twenty wooden pegs line the storage area in two rows of ten. There is a 9.75" of clearance under the first row of pegs and 12" under the second row allowing ample hanging space.
- Two dividers compartmentalize both the left and right side drawers into three equal spaces. One or both dividers can be removed to accommodate a wide variety of storage needs.
- Five piece drawer boxes with English Dovetail joinery at the front and back of the drawer.
- Full Extension, Side-Mounted, Ball Bearing Drawer Guides.
- Outfitted with wooden drawer pulls featuring brushed metal insert.
- Bench built with kiln dried solid poplar frames and poplar veneers.
- For added strength, the case good backs are inset and screwed in place.



COMPARTMENTALIZED DRAWERS



FULL EXTENSION, BALL BEARING GUIDES



# Entertainment Hutch & Writing Desk

Keeping up with the rapid change in technological needs of today's kids can be difficult, but the entertainment hutch is designed to do just that. Most children today stream audio files or watch movies and shows on laptops, tablets and phones while hanging out in their rooms. The NE Kids design team has integrated speakers and an amp in the center cubby of this hutch to ensure that studying is fun. All those devices need a convenient charging station; a power strip with three outlets has been integrated into the center cubby meeting this need.

**Entertainment Hutch X550**  
47.25"L x 10"W x 14.25"H

**Writing Desk X540**  
47.75"L x 22.25"W x 30.25"H

## FEATURES & ACCESSORIES

- A large work area measuring 47.75" w x 22.25" d provides plenty of usable space.
- Featuring integrated speakers, an amp and a charging station in the center cubby.
- Two dividers compartmentalize both the left and right side drawers into three equal spaces. One or both dividers can be removed to accommodate a wide variety of storage needs.
- Five piece drawer boxes with English Dovetail joinery at the front and back of the drawer.
- Full Extension, Side-Mounted, Ball Bearing Drawer Guides.
- Outfitted with wooden drawer pulls featuring brushed metal insert.
- Bench built with kiln dried solid poplar frames and polar veneers.
- For added strength, the case good backs are inset and screwed in place.



CHARGING STATION, AMP & SPEAKERS



COMPARTMENTALIZED DRAWERS



FULL EXTENSION, BALL BEARING GUIDES





# Underbed Options

*The Lake House Collection offers two great options for under your bed or bunk; a trundle or storage drawers. The trundle offers comfort for overnight guests while the storage unit is extremely functional for storage and organization.*

## Trundle X570

75.25"L x 40.5"W x 11.75"H

- The trundle is finished on all 4 sides to ensure a finished look from all angles.
- A wooden slat system provides support for the mattress.
- The trundle face is shaped on the top edge to provide convenient hand holds when accessing the sleeping surface.
- Metal on metal barrel bolt construction adds strength and stability to the trundle.
- Four durable in-line wheels allow the trundle to glide easily in and out from under the bed.
- Works with both the twin and full size Lake House beds as well as the Adrian Bunk.

## FEATURES & ACCESSORIES

## Storage Unit X580

75.25"L x 15.25"W x 13"H

- The storage unit features two large storage drawers and an extra large cubby. The two large storage drawers are 8.25" deep.
- The extra large cubby can be added to either end of the two drawer unit. This important feature allows the cubby to be positioned at the head of the bed regardless on what side the storage unit is placed.
- The cubby is intended to be positioned at the head of the bed on both the twin and full size Lake House Beds or behind the ladder on the Adrian Bunk. The advantage of having a cubby as opposed to a drawer is that the cubby makes this space accessible and therefore extremely useful.
- Five piece drawer boxes with English Dovetail joinery at the front and back of the drawer.
- Full Extension, Side-Mounted, Ball Bearing Drawer Guides.
- Outfitted with wooden drawer pulls featuring brushed metal insert
- Bench built with kiln dried solid poplar frames and wood veneers.







LH-0614



**NE kids**

PO Box 2459  
Christiansburg, VA 24068

Toll Free: (800) 368-0999

Fax: (540) 382-0015

[www.ne-kids.com](http://www.ne-kids.com)